

Manual Crimping Tool



K425BG

CAT. NO.	UPC NO.	DESCRIPTION
K425O	02064	Crimping Tool with D ₃ and O die grooves
K425BG	02065	Crimping Tool with D ₃ and BG die grooves

- Designed for crimping a wide range of overhead service entrance connections, overhead splices, and overhead taps.
- Easy to use MD-6 type “pop” tool.
- Equipped with D₃ die groove and either “BG” or “O” die groove.
- The D₃ die groove serves as a die seat for all Greenlee and industry “W” type dies.
- Bent fiberglass handles provide a solid grip, good leverage, and better durability than wood.
- Teflon impregnated bushings at pivot joints provide smooth operation and long life.
- Complete crimps are assured with an over-center cam mechanism.
- Tool can easily be checked visually for proper adjustment, and can be adjusted with Allen wrenches.

SPECIFICATIONS

Capacity	See crimping tool capacity chart on page 87
Crimping Force	9,000 lb. (40 kN)
Length	25-3/8" (645 mm)
Weight	7.1 lbs. (3.2 kg)

6-Ton Battery-Powered Crimping Tools



EK22GL11



- Ram automatically retracts after the crimp is complete. Operator doesn't need to push a retract lever.
- A two-speed pump advances the ram quickly to start the crimp. Crimp completion time is reduced by over 25 percent. Crimp times range from about five to seven seconds depending on the connector.
- Powerful 12-Volt 2.0 Ah battery provides up to 120 crimps per charge.
- 6-ton capacity. Crimps up to 600 kcmil copper lugs and splices with Greenlee KC22 dies (see page 85) and up to 350 kcmil aluminum lugs and splices with KA22 dies.
- When used with Anderson, Blackburn, FCI Burndy, ILSCO, Panduit, Penn-Union, and Thomas & Betts color-coded connectors, CCX tools are UL and cUL classified up to 600 kcmil with copper connectors and up to 350 kcmil with aluminum connectors.
- Flip-top style opens easily with a simple pull on the side piece and rotates 330°.
- One-hour battery charger, carrying case and two batteries included.
- Choice of a 120-Volt, 230-Volt, or 12-Volt battery charger.
- Equipped with die adapters for “W”-style dies. The adapters are equivalent to “D₃” dies.
- U.S. Patent #6,206,663.

CAT. NO.	UPC NO.	DESCRIPTION
EK22GL11	03551	6-Ton Battery-Powered Crimper with 120-Volt Charger
EK22GL12	03552	6-Ton Battery-Powered Crimper with 12-Volt Charger
EK22GL22	03553	6-Ton Battery-Powered Crimper with 230-Volt Charger

SPECIFICATIONS

Capacity	
Color-coded Copper Lugs & Splices	600 kcmil (maximum size using Greenlee KC22 dies)
Color-coded Aluminum Lugs & Splices	350 kcmil (maximum size using Greenlee KA22 dies)
Other Types of Connectors	See chart on page 87.
Length	12-3/8" (314 mm)
Height	11.75" (298 mm)
Weight	9.7 lbs. (4.4 kg)
Battery	12-Volt 2.0 Ah NiCd
Battery Charge Time	1 hour

12-Ton Battery-Powered Crimping Tools



EK1230



EK1240K



EK1240C



EK1240

- Three crimping head choices: EK1230 for industry “U”-style dies with 1.20" (30 mm) opening, EK1240 for industry “U”-style dies with 1.65" (42 mm) opening, and EK1240K for Kearney PH2-style dies.
- New head designs result in lower weight and improved durability – tested to 50,000 crimp cycles.
- Two-speed pump to reduce cycle time.
- Ram automatically retracts when crimp cycle is complete – a Greenlee exclusive.
- Crimping heads rotate 360°.
- Covered head models have two layers of PVC that total approximately 3/16" (4.8 mm) thick. The outer layer is black and the inner layer is red.
- Powerful 12-Volt 2.0 Ah battery provides up to 35 crimps per charge.
- When used with Anderson, Blackburn, FCI Burndy, ILSCO, Panduit, Penn-Union, and Thomas & Betts copper color-coded connectors, EK1230 and EK1240 tools are UL and cUL classified up to 750 kcmil when used with Greenlee KC12 dies.
- One-hour battery charger, carrying case, and two batteries included.
- U.S. Patent #6,206,663.

CAT. NO.	UPC NO.	DESCRIPTION
EK123011	06429	12-Ton Battery-Powered Crimping Tool w/ 120-Volt Charger
EK123012	06431	12-Ton Battery-Powered Crimping Tool w/ 12-Volt Charger
EK123022	06432	12-Ton Battery-Powered Crimping Tool w/ 230-Volt Charger
EK1230C11	07190	12-Ton Battery-Powered Crimping Tool, 1.2" (30 mm) opening, PVC covered, 120 V Charger
EK1230C12	07191	12-Ton Battery-Powered Crimping Tool, 1.2" (30 mm) opening, 12 V Charger
EK1230C22	07192	12-Ton Battery Powered Crimping Tool, 1.2" (30 mm) opening, PVC covered, 230 V Charger
EK124011	06436	12-Ton Battery-Powered Crimping Tool w/ 120-Volt Charger
EK124012	06437	12-Ton Battery-Powered Crimping Tool w/ 12-Volt Charger
EK124022	06439	12-Ton Battery-Powered Crimping Tool w/ 230-Volt Charger
EK1240C11	07193	12-Ton Battery-Powered Crimping Tool, 1.65 in. (42 mm) opening, PVC covered, w/ 120-Volt Charger
EK1240C12	07194	12-Ton Battery-Powered Crimping Tool, 1.65 in. (42 mm) opening, PVC covered, w/ 12-Volt Charger
EK1240C22	07195	12-Ton Battery-Powered Crimping Tool, 1.65 in. (42 mm) opening, PVC covered, w/ 230-Volt Charger
EK1240K11	06443	12-Ton Battery-Powered Crimping Tool w/ 120-Volt Charger
EK1240K12	06444	12-Ton Battery-Powered Crimping Tool w/ 12-Volt Charger
EK1240K22	06445	12-Ton Battery-Powered Crimping Tool w/ 230-Volt Charger

SPECIFICATIONS

Capacity	
EK1230 & EK1240	See crimping tool capacity chart on page 87
EK1240K	1,033 kcmil – ASCR terminals 477 kcmil – ASCR tension fittings
Crimping Force	12 tons (106 kN)
Length	
EK1230	14-5/8" (371 mm)
EK1240	15-1/4" (387 mm)
EK1240K	15-3/4" (398 mm)
Weight	
EK1230	14.1 lbs (6.4 kg)
EK1240 & EK1240K	14.9 lbs. (6.8 kg)
Battery	12-Volt 2.0 Ah NiCd
Battery Charge Time	1 hour

Battery-Powered Quad-Point Dieless Crimping Tools




- 6.2-ton capacity. Utilizes four indentors to make the crimp.
- Two-speed pump advances the ram quickly to start the crimp, reducing crimp completion time. The ram automatically retracts after the crimp is complete.
- Lightweight, featuring an angled pistol grip and a 360° rotating head.
- Flip-top style uses a pull pin to open head for easy removal from the connector.
- Choice of a 110-Volt, 230-Volt, or 12-Volt one-hour battery charger.
- U.S. Patent #6,206,663.

*FT tools are UL and cUL classified with #4AWG – 750 kcmil (MCM) **copper** color-coded connectors and #6AWG – 750 kcmil (MCM) **aluminum** color-coded connectors of the following brands: Anderson, Blackburn, FCI Burndy, ILSCO, Panduit, Penn-Union, and Thomas & Betts.

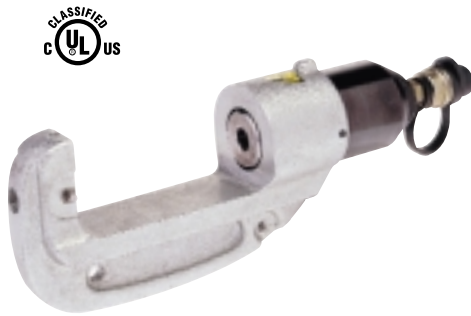
AT tools are UL and cUL classified with #4 – 500 kcmil (MCM) **copper** color-coded connectors of the following brands: Anderson, Blackburn, FCI Burndy, ILSCO, Panduit, Penn-Union, and Thomas & Betts.

CAT. NO.	UPC NO.	DESCRIPTION
EK06AT11	06069	Quad-Point Open Head Dieless Battery-Powered Crimping Tool, with 2 batteries, 110-Volt charger, carrying case, test gauge, and slugs
EK06AT12	06070	Quad-Point Open Head Dieless Battery-Powered Crimping Tool, with 2 batteries, 12-Volt charger, carrying case, test gauge, and slugs
EK06AT22	06071	Quad-Point Open Head Dieless Battery-Powered Crimping Tool, with 2 batteries, 230-Volt charger, carrying case, test gauge, and slugs
EK06ATC11	06203	Quad-Point Battery-Powered Crimping Tool, Open Rubber Covered Head Dieless, 120-Volt charger
EK06ATC12	06204	Quad-Point Battery-Powered Crimping Tool, Open Rubber Covered Head Dieless, 12-Volt charger
EK06ATC22	06206	Quad-Point Battery-Powered Crimping Tool, Open Rubber Covered Head Dieless, 230-Volt charger
EK06FT11	06072	Quad-Point Open Head Dieless Battery-Powered Crimping Tool, with 2 batteries, 110-Volt charger, carrying case, test gauge, and slugs
EK06FT12	06073	Quad-Point Open Head Dieless Battery-Powered Crimping Tool, with 2 batteries, 12-Volt charger, carrying case, test gauge, and slugs
EK06FT22	06074	Quad-Point Open Head Dieless Battery-Powered Crimping Tool, with 2 batteries, 230-Volt charger, carrying case, test gauge, and slugs

SPECIFICATIONS

Capacity	See crimping tool capacity chart on pg. 87
Crimping Force	6.2 tons (55 kN)
Length	
EK60AT	14" (355 mm)
EK60FT	14-7/8" (378 mm)
Weight	
EK60AT	11.1 lbs. (5.0 kg)
EK60FT	10.8 lbs. (4.9 kg)
Battery	12-Volt 2.0 Ah NiCd
Battery Charge Time	1 hour

15-Ton Crimping Tool



- Interchangeable adapters permit the use of a wide variety of die types for all common crimping applications.
- Accepts Kearney PH4/PH14 dies without adapters.
- Lightweight.
- Zinc-plated head resists corrosion better than other finishes.
- Hot stick attachment point is standard.
- Operates with most 10,000 psi (700 bar) hydraulic sources.
- When used with Anderson, Blackburn, FCI Burndy, ILSCO, Panduit, Penn-Union, and Thomas & Betts color-coded connectors, RK1550 is UL and cUL classified up to 750 kcmil when used with Greenlee KC12 dies.
- Equipped with 3/8" male screw-type 10,000 psi (700 bar) coupler.

CAT. NO.	UPC NO.	DESCRIPTION
RK1550	05386	15-Ton Single-Acting Remote-Powered Crimping Tool
48820	48820	Die Adapters – Burndy P Dies (Y46), IlSCO ILD-P Dies
48788	48788	Die Adapters – T&B 15600 Dies, Blackburn 15600 Dies
48802	48802	Die Adapters – Greenlee U Dies, Burndy U Dies, IlSCO ILD Dies, T&B 15500 Dies, Blackburn 15500 Dies
48824	48824	Die Adapters – Kearney PH2/WH2 Dies

SPECIFICATIONS

Capacity

Copper Color-Coded

Lugs & Splices #8 to 1,500 kcmil

Aluminum Color-Coded

Lugs & Splices #8 to 1,000 kcmil

Other Connector Types See the capacity chart on page 87

Crimping Force at

10,000 psi (700 bar) 30,000 lbs (133 kN)

Length 15 in. (380 mm)

Width 3 in. (76 mm)

Height 5-3/8 in. (135 mm)

Weight 14.1 lbs. (6.4 kg)

Operating Pressure 10,000 psi (700 bar)

12-Ton Remote-Powered Crimping Heads



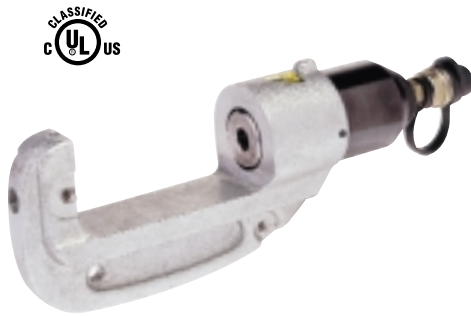
- Three crimping head choices: RK1230 for industry “U”-style dies with 1.20” (30 mm) opening, RK1240 for industry “U”-style dies with 1.65” (42 mm) opening, and RK1240K for Kearney PH2-style dies.
- New head designs result in lower weight and improved durability – tested to 50,000 crimp cycles.
- Boss included on each crimping head for use with hotsticks.
- Easy to get into tight locations, light weight makes them excellent choices for hotstick use.
- Single-acting tools that require an external hydraulic pump capable of 10,000 psi (700 bar).
- Equipped with a 3/8” male screw-type coupler.
- Capable of crimping a wide range of lugs, C-taps, H-taps and overhead tension sleeves.
- When used with Anderson, Blackburn, FCI Burndy, ILSCO, Panduit, Penn-Union, and Thomas & Betts copper color-coded connectors, RK1230 and RK1240 tools are UL and cUL classified up to 750 kcmil when used with Greenlee KC12 dies.
- Covered head models have two layers of PVC that total approximately 3/16” (4.8 mm) thick. The outer layer is black and the inner layer is red.
- Includes steel carrying case.

CAT. NO.	UPC NO.	DESCRIPTION
RK1230	05350	12-Ton Remote-Powered Crimping Head – 1.2” opening
RK1230C	07204	12-Ton Remote-Powered Crimping Head – 1.2” opening, PVC covered
RK1240	05351	12-Ton Remote-Powered Crimping Head – 1.65” opening
RK1240C	07205	12-Ton Remote-Powered Crimping Head – 1.65” opening, PVC covered
RK1240K	05352	12-Ton Remote-Powered Crimping Head – Kearney

SPECIFICATIONS

Capacity	
RK1230 & RK1240	See crimping tool capacity chart on pg. 87
RK1240K	1,033 kcmil – ASCR terminals 477 kcmil – ASCR tension fittings
Crimping Force	12 tons (106 kN)
Length	
RK1230	10-3/4” (273 mm)
RK1240	11-7/8” (302 mm)
RK1240K	12-1/4” (311 mm)
Weight	
RK1230	8.7 lbs (3.9 kg)
RK1240 & RK1240K	9.7 lbs. (4.4 kg)
Max. Operating Pressure	
	10,000 psi (700 bar)

15-Ton Crimping Tool



- Interchangeable adapters permit the use of a wide variety of die types for all common crimping applications.
- Accepts Kearney PH4/PH14 dies without adapters.
- Lightweight.
- Zinc-plated head resists corrosion better than other finishes.
- Hot stick attachment point is standard.
- Operates with most 10,000 psi (700 bar) hydraulic sources.
- When used with Anderson, Blackburn, FCI Burndy, ILSCO, Panduit, Penn-Union, and Thomas & Betts color-coded connectors, RK1550 is UL and cUL classified up to 750 kcmil when used with Greenlee KC12 dies.
- Equipped with 3/8" male screw-type 10,000 psi (700 bar) coupler.

CAT. NO.	UPC NO.	DESCRIPTION
RK1550	05386	15-Ton Single-Acting Remote-Powered Crimping Tool
48820	48820	Die Adapters – Burndy P Dies (Y46), IlSCO ILD-P Dies
48788	48788	Die Adapters – T&B 15600 Dies, Blackburn 15600 Dies
48802	48802	Die Adapters – Greenlee U Dies, Burndy U Dies, IlSCO ILD Dies, T&B 15500 Dies, Blackburn 15500 Dies
48824	48824	Die Adapters – Kearney PH2/WH2 Dies

SPECIFICATIONS

Capacity

Copper Color-Coded

Lugs & Splices #8 to 1,500 kcmil

Aluminum Color-Coded

Lugs & Splices #8 to 1,000 kcmil

Other Connector Types See the capacity chart on page 87

Crimping Force at

10,000 psi (700 bar) 30,000 lbs (133 kN)

Length 15 in. (380 mm)

Width 3 in. (76 mm)

Height 5-3/8 in. (135 mm)

Weight 14.1 lbs. (6.4 kg)

Operating Pressure 10,000 psi (700 bar)

12-Ton Hand-Operated Hydraulic Crimping Tools



- Three crimping head choices: HK1230 for industry “U”-style dies with 1.20” (30 mm) opening, HK1240 for industry “U”-style dies with 1.65” (42 mm) opening, and HK1240K for Kearney PH2-style dies.
- New head designs result in lower weight and improved durability – tested to 50,000 crimp cycles.
- Two-speed pump to reduce cycle time.
- Ram automatically retracts when crimp cycle is complete – a Greenlee exclusive.
- Crimping heads rotate 360°.
- Smaller and lighter than competitive tools.
- When used with Anderson, Blackburn, FCI Burndy, ILSCO, Panduit, Penn-Union, and Thomas & Betts copper color-coded connectors, HK1230 and HK1240 tools are UL and cUL classified up to 750 kcmil when used with Greenlee KC12 dies.
- Covered head models have two layers of PVC that total approximately 3/16” (4.8 mm) thick. The outer layer is black and the inner layer is red.
- Includes steel carrying case.
- U.S. Patent #6,206,663.

CAT. NO.	UPC NO.	DESCRIPTION
HK1230	06426	12-Ton Hand Hydraulic Crimping Tool – 1.2” opening
HK1230C	07199	12-Ton Hand Hydraulic Crimping Tool – 1.2” opening, PVC covered
HK1240	06427	12-Ton Hand Hydraulic Crimping Tool – 1.65” opening
HK1240C	07202	12-Ton Hand Hydraulic Crimping Tool – 1.65” opening, PVC covered
HK1240K	06428	12-Ton Hand Hydraulic Crimping Tool – Kearney

SPECIFICATIONS

Capacity	
HK1230 & HK1240	See crimping tool capacity chart on pg. 87
HK1240K	1033 kcmil – ASCR terminals 477 kcmil – ASCR tension fittings
Crimping Force	
	12 tons (106 kN)
Length	
HK1230	20-3/8” (518 mm)
HK1240	21-1/2” (546 mm)
HK1240K	22” (557 mm)
Weight	
HK1230	12.2 lbs (5.5 kg)
HK1240 & HK1240K	13.2 lbs. (6.0 kg)

12-Ton Manual Hydraulic Crimping Tool



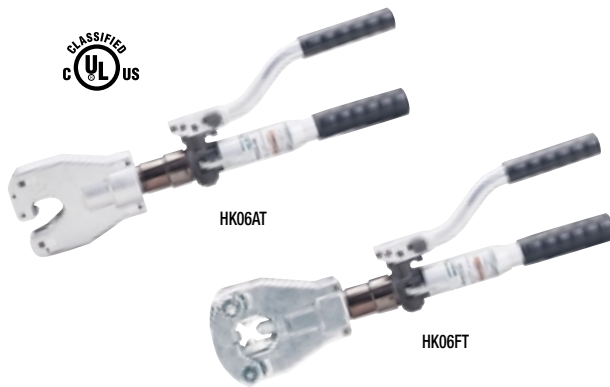
- Two-speed ram advances fast and shifts to lower speed to complete the crimp.
- Strong, lightweight fiberglass handles.
- Pushbutton permits dies to be inserted and removed easily.
- The “C” style head has a 1.2” (30 mm) opening for easy placement on connectors.
- Tool is supplied in a durable molded plastic carrying case.
- Accepts Greenlee and industry “U” style dies for 12-ton tools.
- When used with Anderson, Blackburn, FCI Burndy, ILSCO, Panduit, Penn-Union, and Thomas & Betts copper color-coded connectors, HKL1230 is UL and cUL classified up to 750 kcmil when used with Greenlee KC12 dies.
- Includes molded carrying case.

CAT. NO.	UPC NO.	DESCRIPTION
HKL1230	01760	12-Ton Hydraulic Crimping Tool – 1.2” opening

SPECIFICATIONS

Capacity	
	See crimping tool capacity chart on pg. 87
Crimping Force	
	12 tons (106 kN)
Length	
	24-1/4” (616 mm)
Weight	
	14.1 lbs. (6.4 kg)

Hand-Operated Hydraulic Quad-Point Dieless Crimping Tools



- 6.2 ton capacity. Utilizes four indentors to make the crimp.
- Two-speed pump advances the ram quickly to start the crimp, reducing crimp completion time. The ram automatically retracts after the crimp is complete.
- For use with Anderson brand connectors and other connectors manufactured to ANSI C119.4.
- Flip-top style uses a pull pin to open head for easy removal from the connector.
- Compact, featuring a 360° rotating head.
- U.S. Patent #6,206,663.

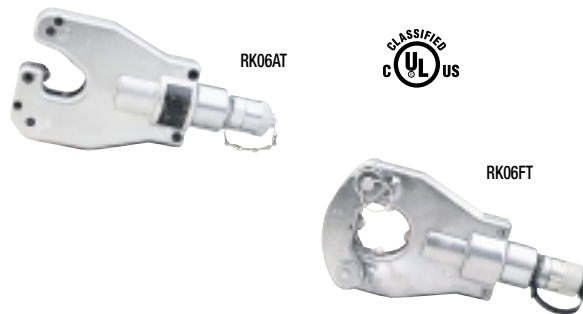
*FT tools are UL and cUL classified with #4AWG – 750 kcmil (MCM) **copper** color-coded connectors and #6AWG – 750 kcmil (MCM) **aluminum** color-coded connectors of the following brands: Anderson, Blackburn, FCI Burndy, ILSCO, Panduit, Penn-Union, and Thomas & Betts.

AT tools are UL and cUL classified with #4 – 500 kcmil (MCM) **copper** color-coded connectors of the following brands: Anderson, Blackburn, FCI Burndy, ILSCO, Panduit, Penn-Union, and Thomas & Betts.

CAT. NO.	UPC NO.	DESCRIPTION
HK06AT	06065	Quad-Point Open Head Dieless Hand-operated Hydraulic Crimping Tool with carrying case, test gauge, and slugs
HK06ATC	06201	Quad-Point Crimping Tool, Open Rubber Covered Head Dieless
HK06FT	06196	Quad-Point Flip-Top Dieless Hand-Operated Hydraulic Crimping Tool with carrying case, test gauge, and slugs

SPECIFICATIONS	
Capacity	See crimping tool capacity chart on pg. 87
Crimping Force	6.2 tons (55 kN)
Length	
HK06AT	20-3/4" (525 mm)
HK06ATC	20-3/4" (525 mm)
HK06FT	21-1/16" (535 mm)
Weight	9.0 lbs. (4.1 kg)

Quad-Point Dieless Remote-Powered Crimping Heads



- 6.2 ton capacity. Utilizes four indentors to make the crimp.
- Operate from 10,000 psi (700 bar) hydraulic pumping sources.
- Small and lightweight for difficult-to-reach locations.
- Equipped with 3/8" male screw-type couplers.
- For use with Anderson brand connectors and other connectors manufactured to ANSI C119.4.
- Flip-top style uses a pull pin to open head for easy removal from the connector.

*FT tools are UL and cUL classified with #4AWG – 750 kcmil (MCM) **copper** color-coded connectors and #6AWG – 750 kcmil (MCM) **aluminum** color-coded connectors of the following brands: Anderson, Blackburn, FCI Burndy, ILSCO, Panduit, Penn-Union, and Thomas & Betts.

AT tools are UL and cUL classified with #4 – 500 kcmil (MCM) **copper** color-coded connectors of the following brands: Anderson, Blackburn, FCI Burndy, ILSCO, Panduit, Penn-Union, and Thomas & Betts.

CAT. NO.	UPC NO.	DESCRIPTION
RK06AT	06066	Quad-Point Open Head Dieless Remote-Powered Crimping Tool with carrying case, test gauge, and slugs
RK06ATC	06202	Quad-Point Open Rubber Covered Head Dieless Remote-Powered Crimping Tool with carrying case, test gauge, and slugs
RK06FT	06197	Quad-Point Flip-Top Head Dieless Remote-Powered Crimping Tool with carrying case, test gauge, and slugs

SPECIFICATIONS	
Capacities	See crimping tool capacity chart on pg. 87
Crimping Force	6.2 tons (55 kN)
Length	
RK06AT	10" (254 mm)
RK06FT	10-1/2" (267 mm)
Weight	6.2 lbs. (2.8 kg)